

Range of offered services

1st stage – advisory help to the client

- Examine the locality, recommend a certain filling station type, examine client's intention due to the town planning scheme.
- Skeleton project of the filling station set, adjust the project according to the client's demands.
- Technological study of the filling station – adequate documentation to the application for the town planning information release.

2nd stage – documentation to the application for the release of a building place decree

- Elaborate of the technological study up to the level of the documentation for the building place decree.
- Provide an expert's report of the studies etc. submitted together with the documentation for the release of the building place decree.
- Obtain standpoints and deliverance of the construction participants and involved state administration bodies to the submitted documentation.
- Obtain a territorial decree.

3rd stage – documentation to the application for a building licence release

- Elaborate of the previous documentation stage and take into account demands and conditions resulting from the released territorial decree up to the level of the documentation submitted together with the application for the building licence release.
- Provide completion of experts' reports submitted together with the documentation to the application for the building licence release.
- Obtain standpoints and deliverance of the construction participants and involved state administration bodies to the submitted documentation.
- Obtain the building licence.

4th stage – construction realization

- Elaborate of the previous documentation stage (only the necessary parts) up to the level of the realization documentation in order to keep the required parameters of the construction.
- Cooperate on evaluation of the offers and select a sub-supplier system for the construction.
- Exercise of author's and construction supervision within the construction realization.
- Provide and obtain the complete construction documentation submitted to the building approval.
- Obtain a building acceptance award.



Modular filling stations



Utilization of air steel structure and roof system framework in a new modern design was inspired by the successful model *V-line* distributors.

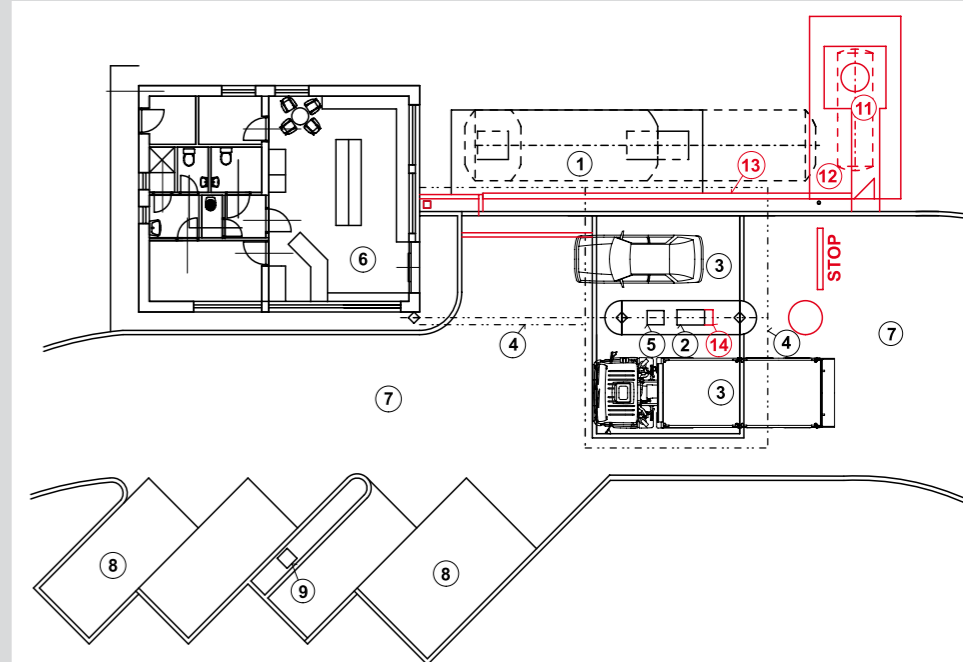
Location of *V-type* major filling stations

- Zones of small settlements building infrastructures
- Attraction zones
- Public the 2nd class communication net

Filling station is intended for distribution of two to three products, it is designed in a modular system using standard technology. Ground plan project can be adapted for local conditions and specific customer's needs.



Fuel technology disposition



Basic configuration of fuel technology

Products storage	
– storage tank type	subterranean, double-layer, parted
– stored products	diesel oil + petrol + foreshots
– total capacity	40 m ³
– of it fuel	35 m ³ >> diesel oil > 20 m ³ + petrol > 15 m ³
– of it foreshots	5 m ³
– way of pumping the products	gravitational
Delivery devices	
– type	1× V-line major H 4602.040/S/VR2/60/40
– number of nozzles	4
– of it diesel oil	2 >> 1 × 40 dm ³ /min + 1 × 40 dm ³ /min
– of it petrol	2 >> 1 × 35 dm ³ /min + 1 × 35 dm ³ /min
Filling station operating system	
– type	POS WIN START
– optional extension	local credit, customer's discount system, etc.
Accessories	
– manual price display	yes
– tyre compressor AIR BOY	yes
– vacuum cleaner CLEAN BOY	no
– manual wash box WASH BOY	no
Minimum building parameters – type solution	
– length	31 m
– width	25 m
– underpass height	4,5 m



Additional configuration of LPG technology

Products storage	
– storage tank type	subterranean, single-layer, under-pressure
– stored products	LPG
– total capacity	5 m ³
– of it fuel	5 m ³
– of it foreshots	0
– way of pumping the products	pump of a road tank
Delivery devices	
– type	1× module V-line major 8690.H10/LPG
– number of nozzles	1
– of it LPG	1 >> 1 × 35 dm ³ /min



Fuel technology disposition

1	subterranean double-layer fuel storage tank parted	40 m ³
	– foreshots	5 m ³
	– petrol BA 95	15 m ³
	– diesel oil	20 m ³
2	V-line major distributor H 4602.040/S/VR2	1 pc
	– double-sided multi-product, products: diesel oil/petrol	2×40/2×35 dm ³ /min
3	manipulation isolated area	43 m ²
4	Roofing the manipulation area	90 m ²
5	Pumping shaft – double-product	1 pc
6	shop	320 m ²
	– selling area	36,3 m ²
	– administrative area (filling station manager's office)	8,7 m ²
	– storage area	6,9 m ²
	– sanitary installations for public	2,9 m ²
	– sanitary installations for the staff	5,8 m ²
7	tertiary roads of the filling station	300 m ²
8	– of it parking places	65 m ²
9	tyre compressor AIR BOY	1 pc
10	price display	1 pc

Disposition of LPG technology

11	subterranean single-layer LPG under-pressure tank	5 m ³
12	fenced area of the subterranean under-pressure tank	21 m ²
13	protection wall (length/height)	13/0,5 m/m
14	module V-line major 8690.H10/LPG	1 pc
	– jone-hose product: LPG	35 dm ³ /min